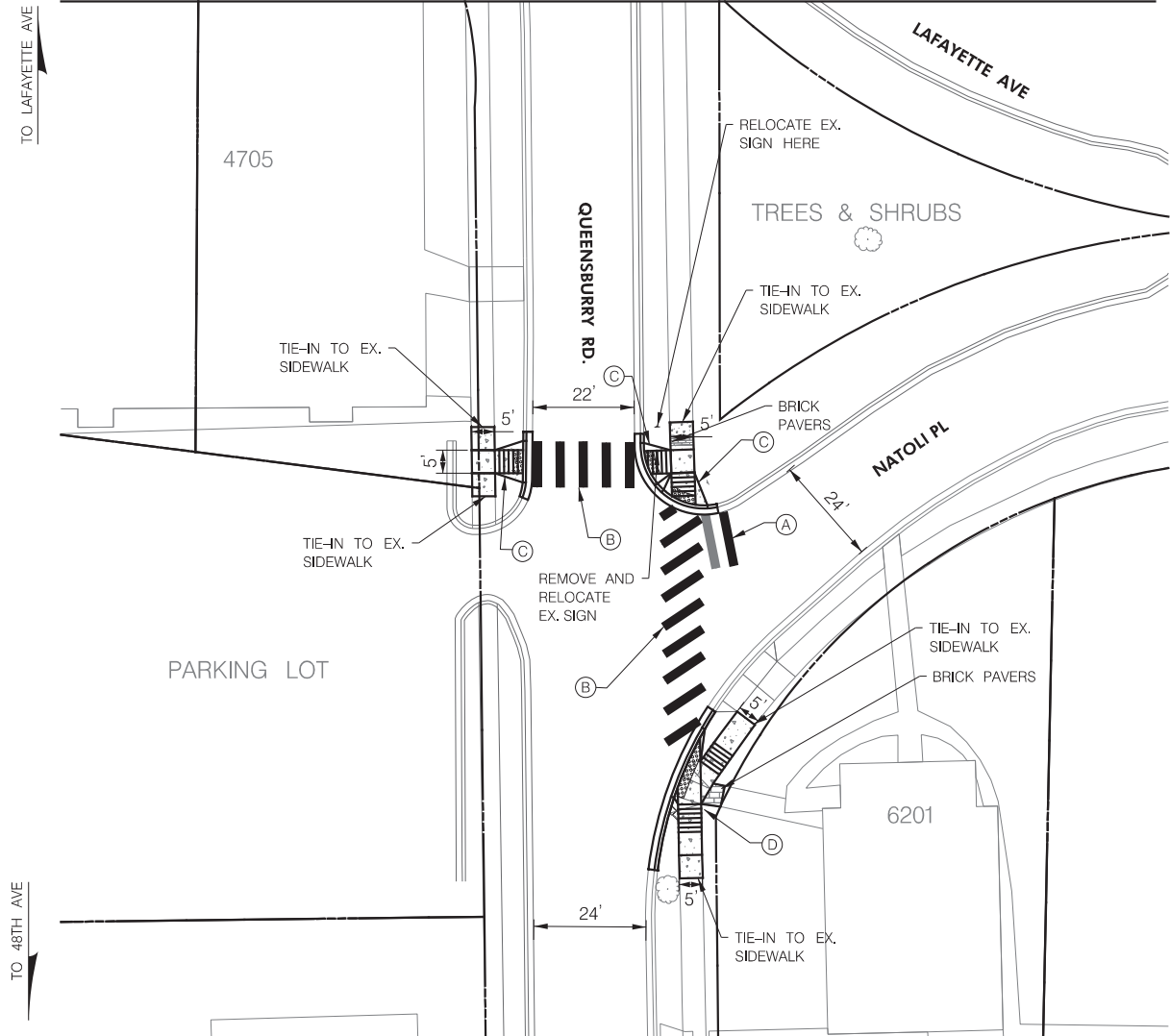


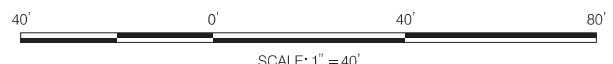
MATCH LINE SEE SHEET PS-20



APPROXIMATE SELECTED QUANTITIES ON THIS SHEET			
DESCRIPTION	UNITS	QTY	
REMOVAL OF EXISTING PAVEMENT LINE MARKINGS, ANY WIDTH	LF	12	
CONCRETE CURB AND GUTTER (PRINCE GEORGE'S COUNTY STD. NO. 300.01)	LF	80	
CONCRETE SIDEWALK RAMP TYPE "A"	EA	3	
CONCRETE SIDEWALK RAMP TYPE "B"	EA	1	
THERMOPLASTIC STOP BAR, 24 INCH	LF	12	
THERMOPLASTIC CROSSWALK, 12 INCH	LF	280	
TURFGRASS ESTABLISHMENT	SY	25	
TOPSOILING - 2 INCH	SY	25	
DETECTABLE WARNING SURFACE FOR CURB RAMPS	SF	56	
CONCRETE SIDEWALK	SF	207	
BRICK PAVERS	SF	26	
RELOCATE EX. GROUND MOUNTED SIGNS AND SUPPORT	EA	1	
CLASS 2 EXCAVATION	CY	6	
4 INCH GRADED AGGREGATE SUBBASE (GASB) COURSE	SY	53	

**NOTES:**

- THESE PLANS ARE NOT BASED ON FIELD RUN SURVEY. LOCATION OF EXISTING AND PROPOSED FEATURES SHOWN ON PLANS ARE APPROXIMATE.
- SAW CUTTING FOR NEW PAVING AND CURB, SHALL BE INCIDENTAL TO THE ASPHALT PAVING ITEMS.
- EX. SIGNS LOCATED AT THE SIDEWALK RAMP CONSTRUCTION, SHALL BE RELOCATED AT A MINIMUM OF 24 INCHES FROM THE FACE OF CURB TO THE EDGE OF SIGN FACE, OR 1' MIN. FROM THE BACK OF PROP. SIDEWALK TO THE EDGE OF SIGN FACE.
- ALL DIMENSIONS FROM THE CROSSWALK ARE MEASURED TO THE FACE OF CURB OF THE INTERSECTING STREET.



**LEGEND**

- NEW CONCRETE SIDEWALK
- DETECTABLE WARNING SURFACE
- APPROXIMATE RIGHT OF WAY BASED ON GEOGRAPHIC INFORMATION SYSTEM FROM PRINCE GEORGE'S COUNTY
- NEW CURB AND GUTTER
- (A) THERMOPLASTIC STOP BAR, 24 INCH SEE DWG. DE-01
- (B) THERMOPLASTIC CROSSWALK, 24 INCH SEE DWG. DE-01 (PAID UNDER THE PAY ITEM FOR "THERMOPLASTIC CROSSWALK, 12 INCH")
- (C) CONCRETE SIDEWALK RAMP TYPE "A" PER PRINCE GEORGE'S COUNTY STD. NO. 300.07 WITH MODIFIED CONCRETE CURB PER PRINCE GEORGE'S STANDARD NO. 300.01.
- (D) CONCRETE SIDEWALK RAMP TYPE "B" PER PRINCE GEORGE'S COUNTY STD. NO. 300.08 WITH 6" HIGH MODIFIED CONCRETE CURB PER PRINCE GEORGE'S STANDARD NO. 300.01.

**PENNONI ASSOCIATES INC.**  
351 W Camden Street, Suite 200  
Baltimore, MD 21201  
T 410.878.9550  
F 410.878.9551

*PROFESSIONAL CERTIFICATION*

I HEREBY CERTIFY THAT THESE DOCUMENTS WERE PREPARED OR APPROVED BY ME, AND THAT I AM A DULY LICENSED ENGINEER UNDER THE LAWS OF THE STATE OF MARYLAND. LICENSE NO.: 33919 EXPIRATION DATE: 01/25/2025

04/26/23		ADDENDUM NO. 1	DK
05/04/23		ADDENDUM NO. 2	DK
DATE	NO.	REVISIONS	BY

**RIVERDALE PARK ROAD IMPROVEMENT PROGRAM - FY2023**

TOWN OF RIVERDALE PARK  
PRINCE GEORGE'S COUNTY, MD

QUEENSBURY RD. - NATOLI PL.

5008 QUEENSBURY ROAD  
RIVERDALE PARK, MD 20737  
DEPARTMENT OF PUBLIC WORKS

CONTRACT NO.	DWP 2023-003
DATE	04/13/2023
DRAWING SCALE	1" = 40'
DRAWN BY	DK
APPROVED BY	AM / EH
DWG. NO.	PS-21 OF 34
<b>ROADWAY PLAN</b>	
SHEET	27 OF 40